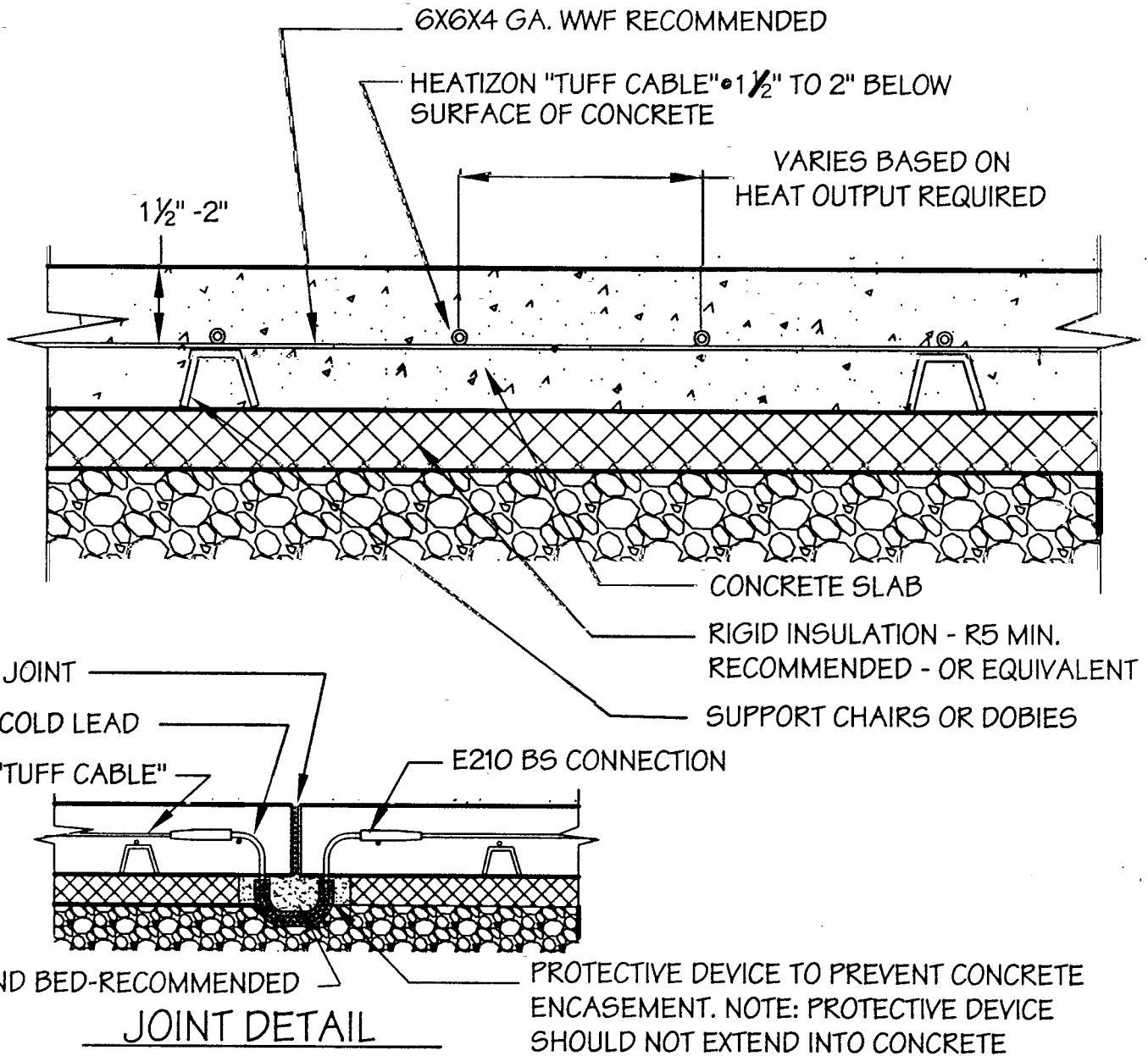


**WARNING!!**

DO NOT CUT OR DAMAGE  
HEATIZON "TUFF CABLE" OR  
ITS INSULATOR IN ANY WAY

**NOTE:**

"TUFF CABLE" SHALL NOT EXTEND  
THROUGH EXPANSION, CONTROL OR  
ANY OTHER JOINTS. "JUMPER" TO  
BE USED AT ALL JOINTS.



DRAWING NO.:

FH-9M

**TUFF CABLE IN CONCRETE  
& JOINT DETAIL**

DRAWN BY:

JNL

DATE:

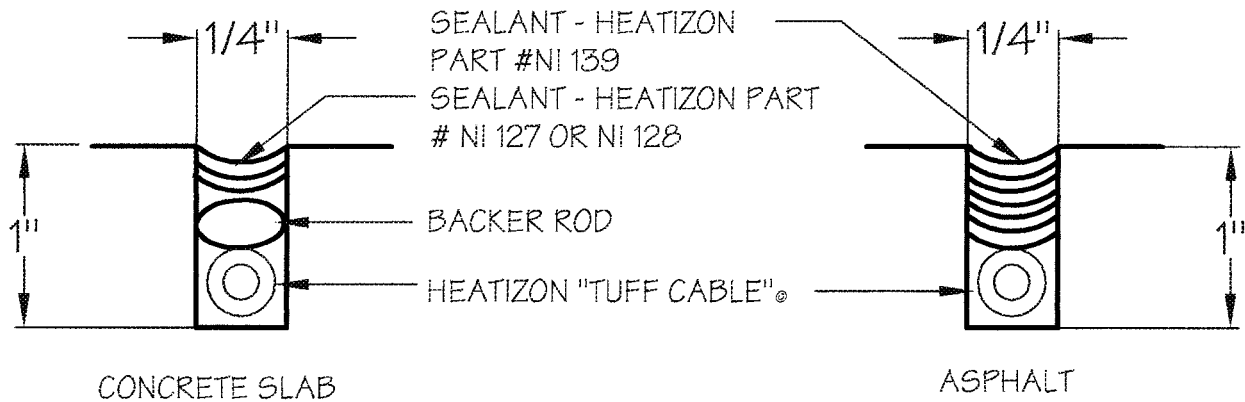
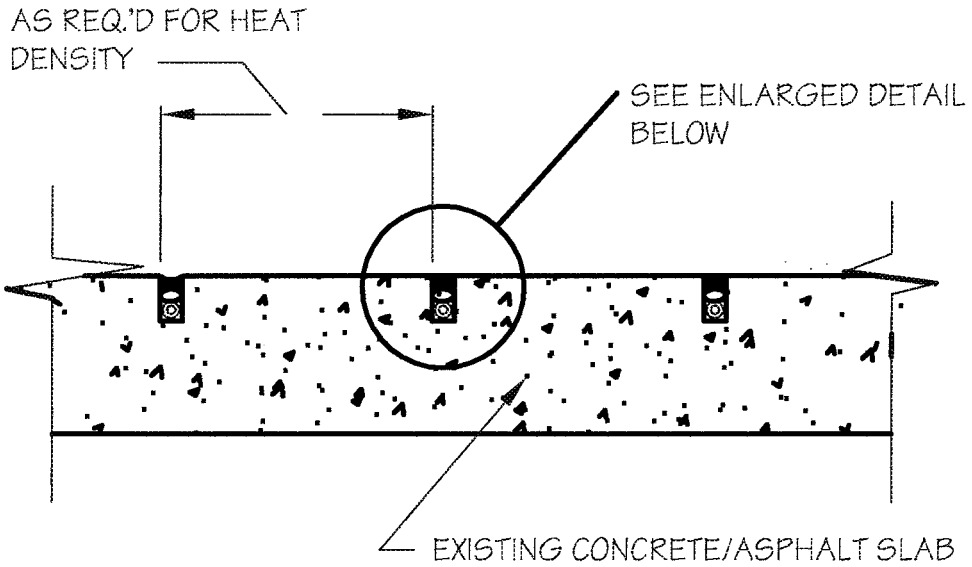
MAR. 2004

**HEATIZON SYSTEMS**

*advanced floor heating/ snowand ice removal systems*

4403 SOUTH 500 WEST, MURRAY, UTAH 84123 PH (801) 293-1232 FAX (801) 293-3077

**WARNING!!**  
 DO NOT CUT OR DAMAGE  
 HEATIZON "TUFF CABLE" OR  
 ITS INSULATOR IN ANY WAY



DRAWING NO.: <b>FH-13</b>	<b>TUFF CABLE RETROFIT IN CONCRETE OR ASPHALT</b>	DRAWING NO.: JNL
		DATE: FEB. 2003

**HEATIZON SYSTEMS**  
*advanced floor heating/ snow and ice removal systems*

4403 SOUTH 500 WEST, MURRAY, UTAH 84123 PH (801) 293-1232 FAX (801) 293-3077